

The image features a dark teal background with large, faint leaf silhouettes in the upper left and lower right. The Miditer logo is positioned in the top right, with the tagline 'NATURALLY YOURS' below it. A large, faint 'miditer' watermark is visible in the lower right. The bottom of the image has a colorful geometric border with shades of green, yellow, and orange.

**Miditer**  
NATURALLY YOURS

Helping people  
lead a **healthier**  
& **happier** life.

# DISCOVER THE WORLD OF MIDITER

We believe that today, consumers are not just focused on eating good food, but also on the impact their actions have on the planet of earth.

At Miditer, our primary goal is to help people access nutritious, tasty, sustainably produced food.

**Plant Based  
Meat Alternatives**

**Canned Products**



All our products are grown, harvested and packed sustainably, with the added promise of complete transparency throughout our supply chain. We go a step further to empower our farming community with the right tools and equipment, and impart knowledge on responsible farming practices for high crop yield.

Our product range features tropical coconut products, exotic fruits and more, each sustainably harvested and ideal for maintaining a healthy lifestyle.

## Organic Dried Fruit Products



## Organic Fruit Products



# EXTENDED PORTFOLIO

Organic  
Coconut Products

King Coconut  
with Natural Juices





Spreads

Nutraceuticals



# CERTIFIED BY

Our certifications reflect our unwavering commitment to transparency, quality, and sustainability.



EU ORGANIC



JAS



NATURLAND



USDA



KOSHER



BRCGS



HACCP



SMETA 4 pillars



FAIRTRADE




ISO 22000:2018





USCOEA



BIO SUISSE ORGANIC

 Certified for both facilities

 Certified for Virgin Oil International PVT Ltd

 Certified for Tropical Health Foods PVT Ltd

# WHERE DO OUR PRODUCTS COME FROM?

Our farms and production facilities are located in the tropical island of Sri Lanka where the soil is fertile, the air is fresh, the sun shines bright and the water is pure!

We work closely with Sri Lankan farmers in rural communities by equipping them with essential technical knowledge, raw materials and machinery to yield better products with minimal impact to the environment.

Our production facilities are geared to process and package a range of agricultural products, from coconuts and their by-products to fruits and more, in a sustainable, safe, and hygienic way.



# WE ARE COMMITTED TO SUSTAINABLE DEVELOPMENT

Sustainability is one of our pillars of strength, and it forms the foundation of our ethos and values. It is the key ingredient that ties our passionate team and partners together.

Working together with farmers that have years of experience and skills in growing produce, we also equip them with modern tools and equipment to enhance the quality and productivity of their efforts, whilst empowering their lives in the process.





# WE LOVE OUR FARMING COMMUNITY

## Elevating lives, Empowering Farmers: Our Out-Grower Program

DIMO Agribusiness's farmer Out-Grower Program serves as a pathway to sustainable agriculture in Sri Lanka. By engaging with smallholder farmers and implementing various initiatives, DIMO Agribusiness ensures a consistent supply of raw materials for processes and fosters positive impacts on livelihoods, local economies, and the environment.

### *We are,*

- *The company with the largest out-grower farmer network.*
- *Engaged in forward contract agreements to supply company-branded products.*
- *Committed to transferring knowledge to keep farmers updated.*
- *Providing all agricultural inputs under one roof for convenience.*
- *Conducting continuous field programs and demonstrations to support farmers.*
- *Offering farmer training in our own Agri-Techno parks to enhance skills and expertise.*

### *Easy access to;*

- 🌿 *Complete agriculture solutions*
- 🌿 *Farmer education*
- 🌿 *On-site support*

### *Benefiting them with;*

- 🌿 *Increased efficiency*
- 🌿 *Stable income*
- 🌿 *Enhanced ecosystem*
- 🌿 *High-quality produce*

# ORGANIC FRUIT PRODUCTS



# ORGANIC PINEAPPLE CHUNKS IN PINEAPPLE JUICE



## Available sizes & packings:

Package Type	SKUs
Glass Jars	370ml, 720ml
Cans	3kg, 400ml

## Uses:

- Can be consumed directly.
- Add to a fruit salad or blended for a juice.
- Used as a topping for desserts like cakes and tarts.



## Nutritional Panel:

	Quantity per 100 g
Energy	221 kJ / 53 kcal
Fat	<0.5 g
- of which Saturates	<0.1 g
Carbohydrate	13 g
- of which Sugars	12 g
Fibre	1.1 g
Protein	0.6 g
Salt	<0.15 g

## Loading Details:

Unit size	No. of units per carton	No. of cartons per pallet	Layers on a pallet	No. of pallets in 20ft container	No. of cartons in freeloader 20ft container	L (mm)	W (mm)	H (mm)	Master Carton CBM
400ml	6	372	12	10	4956	228	160	120	0.00437
370ml	6	256	8	10	4572	220	148	135	0.0044
720ml	6	140	7	10	2400	277	184	150	0.0076
3kg	4 cans	63	7	10	952 cans	340	310	195	0.0206

## Storage Conditions:

Store in a cool, dry place and away from direct sun light.  
Refrigerate once opened and use within 3 days.

**Shelf Life: 2 years**

# ORGANIC PINEAPPLE RINGS IN PINEAPPLE JUICE



## Available sizes & packings:

Package Type	SKUs
Glass Jars	420ml
Cans	3kg, 400ml

## Uses:

- Can be consumed directly.
- Add to a fruit salad or blended for a juice.
- Used as a topping for desserts like cakes and tarts.

## Nutritional Panel:

	Quantity per 100 g
Energy	221 kJ / 53 kcal
Fat	<0.5 g
- of which Saturates	<0.1 g
Carbohydrate	13 g
- of which Sugars	12 g
Fibre	1.1 g
Protein	0.6 g
Salt	<0.15 g

## Loading Details:

Unit size	No. of units per carton	No. of cartons per pallet	Layers on a pallet	No. of pallets in 20ft container	No. of cartons in free-loaded 20ft container	L (mm)	W (mm)	H (mm)	Master Carton CBM
420ml	6	220	10	10	3204	260	175	100	0.0046
400ml	6 cans	372	12	10	4956 cans	228	160	120	0.00437
3kg	4 cans	63	7	10	952 cans	340	310	195	0.0206

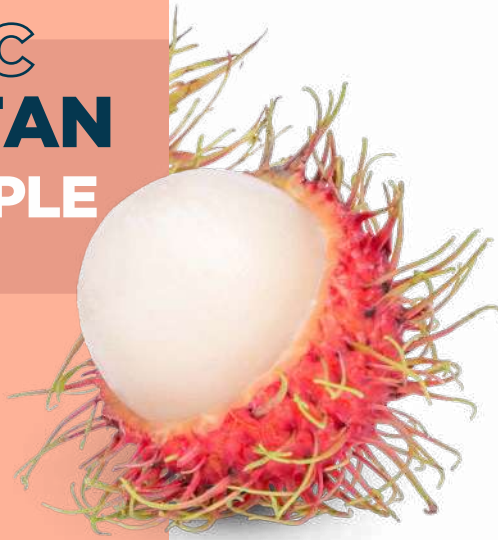
## Storage Conditions:

Store in a cool, dry place and away from direct sun light.  
Refrigerate once opened and use within 3 days.

**Shelf Life: 2 years**



# ORGANIC RAMBUTAN IN PINEAPPLE JUICE



## Available sizes & packings:

Package Type	SKUs
Glass Jars	370ml
Cans	3kg, 400ml

## Uses:

- Can be consumed as is.
- Add to desserts or toppings.
- Can be used in juices and smoothies.



## Nutritional Panel:

	Quantity per 100 g
Energy	301 kJ / 72 kcal
Fat	<0.5 g
- of which Saturates	<0.1 g
Carbohydrate	19 g
- of which Sugars	17 g
Fibre	1.0 g
Protein	0.3 g
Salt	0.03 g

## Loading Details:

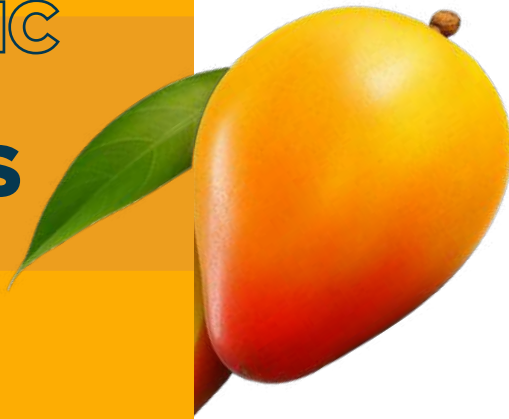
Unit size	No. of units per carton	No. of cartons per pallet	Layers on a pallet	No. of pallets in 20ft container	No. of cartons in free loaded 20ft container	L (mm)	W (mm)	H (mm)	Master Carton CBM
370ml	6	256	8	10	4572	220	148	135	0.0044
400ml	6 cans	372	12	10	4956 cans	228	160	120	0.00437
3kg	4 cans	63	7	10	952 cans	340	310	195	0.0206

## Storage Conditions:

Store in a cool, dry place and away from direct sun light.  
Refrigerate once opened and use within 3 days.

**Shelf Life: 2 years**

# ORGANIC MANGO CHUNKS IN MIXED JUICE



## Available sizes & packings:

Package Type	SKUs
Glass Jars	370ml
Cans	3kg, 400ml

## Uses:

- Can be consumed directly.
- Add to a fruit salad or blended for a juice.
- Used as a topping for desserts like cakes and tarts.



## Nutritional Panel:

	Quantity per 100 g
Energy	209 kJ / 50 kcal
Fat	<0.5 g
- of which Saturates	<0.1 g
Carbohydrate	14 g
- of which Sugars	12 g
Fibre	2 g
Protein	0.4 g
Salt	0.04 g

## Loading Details:

Unit size	No. of units per carton	No. of cartons per pallet	Layers on a pallet	No. of pallets in 20ft container	No. of cartons in freeloader 20ft container	L (mm)	W (mm)	H (mm)	Master Carton CBM
370ml	6	256	8	10	4572	220	148	135	0.0044
400ml	6 cans	372	12	10	4956 cans	228	160	120	0.00437
3kg	4 cans	63	7	10	952 cans	340	310	195	0.0206

## Storage Conditions:

Store in a cool, dry place and away from direct sun light.  
Refrigerate once opened and use within 3 days.

**Shelf Life: 2 years**

# ORGANIC TROPIMIX CHUNKS IN MIXED JUICE

## Available sizes & packings:

Package Type	SKUs
Glass Jars	370ml
Cans	3kg, 400ml

## Uses:

- Can be consumed as a fruit salad or blended for a juice.
- Can be consumed directly.
- Used as a topping for desserts like cakes, tarts.



## Nutritional Panel:

	Quantity per 100 g
Energy	194 kJ / 46 kcal
Fat	<0.5 g
- of which Saturates	<0.1 g
Carbohydrate	14 g
- of which Sugars	11 g
Fibre	2.3 g
Protein	0.3 g
Salt	0.04 g

## Loading Details:

Unit size	No. of units per carton	No. of cartons per pallet	Layers on a pallet	No. of pallets in 20ft container	No. of cartons in free-loaded 20ft container	L (mm)	W (mm)	H (mm)	Master Carton CBM
370ml	6	256	8	10	4572	220	148	135	0.0044
400ml	6 cans	372	12	10	4956 cans	228	160	120	0.00437
3kg	4 cans	63	7	10	952 cans	340	310	195	0.0206

## Storage Conditions:

Store in a cool, dry place and away from direct sun light.  
Refrigerate once opened and use within 3 days.

**Shelf Life: 2 years**

# ORGANIC PAPAYA CHUNKS IN MIXED JUICE



## Available sizes & packings:

Package Type	SKUs
Glass Jars	370ml
Cans	3kg, 400ml

## Uses:

- It can be consumed directly as a fruit salad or blended to make a refreshing smoothie.
- As a topping on your favourite dish.



## Nutritional Panel:

	Quantity per 100 g
Energy	189 kJ / 45 kcal
Fat	<0.5 g
- of which Saturates	<0.1 g
Carbohydrate	13 g
- of which Sugars	11 g
Fibre	1.5 g
Protein	0.3 g
Salt	0.08 g

## Loading Details:

Unit size	No.of units per carton	No.of cartons per pallet	Layers on a pallet	No.of pallets in 20ft container	No.of cartons in free loaded 20ft container	L (mm)	W (mm)	H (mm)	Master Carton CBM
370ml	6	256	8	10	4572	220	148	135	0.0044
400ml	6 cans	372	12	10	4956 cans	228	160	120	0.00437
3kg	4 cans	63	7	10	952 cans	340	310	195	0.0206

## Storage Conditions:

Store in a cool, dry place and away from direct sun light.  
Refrigerate once opened and use within 3 days.

**Shelf Life: 2 years**



# ORGANIC BOILED YOUNG JACKFRUIT CHUNKS IN BRINE



## Available sizes & packings:

Package Type	SKUs
Glass Jars	420ml
Cans	3kg, 400ml

## Uses:

- Young jackfruit is the ideal meat alternative, suitable for use in curries, sandwiches and even stews.
- Boil chunks as is, and add spices to make stews, curries, etc.



## Nutritional Panel:

	Quantity per 100 g
Energy	142 kJ / 34 kcal
Fat	<0.5 g
- of which Saturates	<0.1 g
Carbohydrate	6.6 g
- of which Sugars	0.3 g
Fibre	4.3 g
Protein	1 g
Salt	0.7 g

## Loading Details:

Unit size	No. of units per carton	No. of cartons per pallet	Layers on a pallet	No. of pallets in 20ft container	No. of cartons in free-loaded 20ft container	L (mm)	W (mm)	H (mm)	Master Carton CBM
420ml	6	220	10	10	3204	260	175	100	0.0046
400ml	6 cans	372	12	10	4956 cans	228	160	120	0.00437
3kg	4 cans	63	7	10	952 cans	340	310	195	0.0206

## Storage Conditions:

Store in a cool, dry place and away from direct sun light.  
Refrigerate once opened and use within 2 days.

**Shelf Life: 2 years**

# ORGANIC RIPE JACKFRUIT PIECES IN MIXED JUICE



## Available sizes & packings:

Package Type	SKUs
Glass Jars	370ml
Cans	3kg, 400ml

## Uses:

- Can be consumed directly.
- Add to desserts or use as a topping.



## Nutritional Panel:

	Quantity per 100 g
Energy	166 kJ / 40 kcal
Fat	<0.5 g
- of which Saturates	<0.1 g
Carbohydrate	11 g
- of which Sugars	9.2 g
Fibre	1.3 g
Protein	0.4 g
Salt	0.03 g

## Loading Details:

Unit size	No. of units per carton	No. of cartons per pallet	Layers on a pallet	No. of pallets in 20ft container	No. of cartons in free-loaded 20ft container	L (mm)	W (mm)	H (mm)	Master Carton CBM
370ml	6	256	8	10	4572	220	148	135	0.0044
400ml	6 cans	372	12	10	4956 cans	228	160	120	0.00437
3kg	4 cans	63	7	10	952 cans	340	310	195	0.0206

## Storage Conditions:

Store in a cool, dry place and away from direct sun light.  
Refrigerate once opened and use within 3 days.

**Shelf Life: 2 years**

# ORGANIC SOURSOP IN PINEAPPLE JUICE



## Available sizes & packings:

Package Type	SKUs
Glass Jars	370ml
Cans	3kg, 400ml

## Uses:

- Can be consumed as is.
- Add to desserts or toppings.
- Can be used in juices and smoothies.



## Nutritional Panel:

	Quantity per 100 g
Energy	214 kJ / 51 kcal
Fat	<0.5 g
- of which Saturates	<0.1 g
Carbohydrate	14 g
- of which Sugars	12 g
Fibre	1.7 g
Protein	0.4 g
Salt	0.06 g

## Loading Details:

Unit size	No. of units per carton	No. of cartons per pallet	Layers on a pallet	No. of pallets in 20ft container	No. of cartons in free-loaded 20ft container	L (mm)	W (mm)	H (mm)	Master Carton CBM
370ml	6	256	8	10	4572	220	148	135	0.0044
400ml	6	372	12	10	4956 boxes	228	160	120	0.00437
3kg	4 cans	63	7	10	952 cans	340	310	195	0.0206

## Storage Conditions:

Store in a cool, dry place and away from direct sun light.  
Refrigerate once opened and use within 3 days.

**Shelf Life: 2 years**

# ORGANIC DEHYDRATED FRUIT PRODUCTS



## Available sizes & packings:

Package Type	SKUs
Pouches	50g, 100g, 200g
Bags	1kg, 2.5kg



## Loading Details:

Unit size	No. of units per carton	No. of cartons per pallet	Layers on a pallet	No. of pallets in 20ft container	No. of cartons in freeloaded 20ft container	L (mm)	W (mm)	H (mm)	Master Carton CBM
50g	12 Pouches	400	20	10	4796	300	200	90	0.0054
100g	12 Pouches	200	10	10	2398	300	200	180	0.0108
200g	6 Pouches	200	10	10	2398	300	200	180	0.0108
1 kg	6 bags	60	5	10	760	300	270	390	0.0316
2.5 kg	4 bags	36	4	10	408	380	330	520	0.0652

# ORGANIC DEHYDRATED PINEAPPLE RINGS

## Uses:

- 🌿 Can be consumed as is.
- 🌿 Add to desserts or toppings.

## Storage Conditions:

Store in a cool, dry place which is free from extraneous odours and away from direct sun light.

**Shelf Life: 12 months**

## Nutritional Panel:

	Quantity per 100 g
Energy	1255 kJ / 300 kcal
Fat	<0.5 g
- of which Saturates	<0.1 g
Carbohydrate	85 g
- of which Sugars	31 g
Fibre	11 g
Protein	2 g
Salt	0.09 g



# ORGANIC DEHYDRATED PINEAPPLE TIDBITS

## Uses:

- 🌿 Can be consumed as is.
- 🌿 Add to desserts or toppings.

## Storage Conditions:

Store in a cool, dry place which is free from extraneous odours and away from direct sun light.

**Shelf Life: 12 months**



## Nutritional Panel:

	Quantity per 100 g
Energy	1255 kJ / 300 kcal
Fat	<0.5 g
- of which Saturates	<0.1 g
Carbohydrate	85 g
- of which Sugars	31 g
Fibre	11 g
Protein	2 g
Salt	0.09 g

# ORGANIC DEHYDRATED MANGO

## Uses:

- 🌿 Can be consumed as is.
- 🌿 Add to desserts or toppings.

## Storage Conditions:

Store in a cool, dry place which is free from extraneous odours and away from direct sun light.

**Shelf Life: 12 months**



## Nutritional Panel:

	Quantity per 100 g
Energy	1263 kJ / 302 kcal
Fat	<0.5 g
- of which Saturates	<0.1 g
Carbohydrate	86 g
- of which Sugars	50 g
Fibre	12 g
Protein	2.1 g
Salt	0.09 g



# ORGANIC DEHYDRATED PAPAYA

## Uses:

- 🌿 Can be consumed as is.
- 🌿 Add to desserts or toppings.

## Storage Conditions:

Store in a cool, dry place which is free from extraneous odours and away from direct sun light.

**Shelf Life: 12 months**



## Nutritional Panel:

	Quantity per 100 g
Energy	1121 kJ / 268 kcal
Fat	<0.5 g
- of which Saturates	<0.1 g
Carbohydrate	80 g
- of which Sugars	42 g
Fibre	15 g
Protein	2 g
Salt	0.33 g

# ORGANIC DEHYDRATED BANANA

## Uses:

- 🌿 Can be consumed as is.
- 🌿 Add to desserts or toppings.

## Storage Conditions:

Store in a cool, dry place which is free from extraneous odours and away from direct sun light.

**Shelf Life: 12 months**



## Nutritional Panel:

	Quantity per 100 g
Energy	1255 kJ / 300 kcal
Fat	<0.5 g
- of which Saturates	<0.1 g
Carbohydrate	84 g
- of which Sugars	42 g
Fibre	9.9 g
Protein	1.3 g
Salt	0.24 g



# ORGANIC DEHYDRATED RIPE JACKFRUIT

## Uses:

- 🌿 Can be consumed as is.
- 🌿 Add to desserts or toppings.

## Storage Conditions:

Store in a cool, dry place which is free from extraneous odours and away from direct sun light.

**Shelf Life: 12 months**



## Nutritional Panel:

	Quantity per 100 g
Energy	1188 kJ / 284 kcal
Fat	<0.5 g
- of which Saturates	<0.1 g
Carbohydrate	83 g
- of which Sugars	50 g
Fibre	15 g
Protein	2.9 g
Salt	0.09 g

# ORGANIC COCONUT PRODUCTS



# ORGANIC VIRGIN COCONUT OIL

## Available sizes & packings: Uses:

Package Type	SKUs
Glass Jars	200ml, 250ml, 500ml, 1L
Cans	4L
Jerry Cans	20L
Pails	20L
Drums	210L
Totes	1000L

- 🌿 Frying, sautéing and other cooking methods.
- 🌿 Baking.
- 🌿 Alternative to butter, spreads, salad dressing.
- 🌿 Topical usage to boost hair, skin and oral health.

## Storage Conditions:

Store in a cool & dry place.

**Shelf Life: 24 months**

## Loading Details:

Unit size	No. of units per carton	No. of cartons per pallet	Layers on a pallet	No. of pallets in 20ft container	No. of cartons in free loaded 20ft container	L (mm)	W (mm)	H (mm)	Master Carton CBM
200ml	24	144	12	10	1976	435	295	120	0.1540
250ml	12	228	19	10	3120	380	290	90	0.0992
500ml	12	168	14	10	2048	365	275	145	0.1455
1L	6	180	20	10	2736	305	198	195	0.1178

## Loading Details: (Bulk Packaging)

Bulk Packaging	Size	Units per pallet	Units per 20ft FCL
20 Litre Jerry Cans	20L	48	480
20 Litre Pail	20L	48	480
210 Litre Drums	210L	4	80
1000 Litre Totes	1000L	1	20

## Nutritional Panel:

Average Nutritional Values Per 100g	
Energy	3761 kJ / 899 kcal
Fat	99g
-of which Saturates	93g
Trans Fat	0g
Carbohydrate	0g
-of which Sugars	0g
Dietary fibre	0g
Protein	0g
Salt	0g
Sodium	0g
Cholesterol	0g

# DESICCATED COCONUT

## Available sizes & packings:

Package Type	SKUs
Bags	10kg, 15kg, 25lbs, 25kg, 50kg

## Uses:

- Use in confectionaries - as an ingredient in sweet and savoury recipes.
- As a coating or topping.

## Storage Conditions:

Store in a cool & dry place.

**Shelf Life: 12 months**

## Loading Details:

Packaging	Size	Units per pallet	Units per 20ft FCL
25 lbs bags	20lbs	80 (Pallet size – 1000mm x 1200mm)	1000 (floor loading)
25 kg bags	25kg	24 (Pallet size – 1000mm x 1200mm)	500 (Floor loading)

## Nutritional Panel:

Average Nutritional Value per 100g	
Energy	2971kJ / 710kcal
Protein	8g
Fat	68g
-of which Saturates	62g
Carbohydrate	22g
-of which Sugars	9g
Fibre	14g
Salt	0g



# COCONUT CHIPS NATURAL/ ROASTED

## Available sizes & packings:

Package Type	SKUs
Bags	25kg
Boxes	10kg

## Uses:

- Can be consumed as is.
- Sprinkled as a topping – smoothie bowl, granola, oatmeal.
- Use as an ingredient in confectionary.

## Storage Conditions:

Store in a cool & dry place.

**Shelf Life: 12 months**

## Nutritional Panel:

Average Nutritional Value per 100g	
Energy	2900kJ / 693.2kcal
Protein	5.8g
Fat	68g
-of which Saturates	58.5g
Carbohydrate	14.5g
-of which Sugars	6.4g
Fibre	13g
Salt	0g



# ORGANIC COCONUT FLOUR

## Available sizes & packings:

Package Type	SKUs
Pouches	500g
Bags	20kg, 25kg
Boxes	10kg

## Uses:

- Alternative to wheat flour when baking or cooking.
- Ideal to make bread, pancakes, cakes, buns, cookies, pasta and more.
- Can also be used as a crispy coating for vegetables in stir-fries.

## Loading Details:

Unit size	No. of units per carton	No. of cartons per pallet	Layers on a pallet	No. of pallets in 20ft container	No. of cartons in freloaded 20ft container	L (mm)	W (mm)	H (mm)	Master Carton CBM
500g	12	144	8	10	1866	340	180	245	0.0150
25kg bags	-	40	5	10	800 (Floor loading)	870	100	560	0.0487

## Storage Conditions:

Store in a cool & dry place.

**Shelf Life: 12 months**

## Nutritional Panel:

Average Nutritional Value per 100g	
Energy Value	1729kJ / 413kcal
Protein	18g
Carbohydrate	59g
-of which Sugars	7g
Total Fat	15g
Saturated Fat	14g
Unsaturated	1g
Polyunsaturated	0.7g
Monounsaturated	0.3g
Dietary Fibre	38g
Sodium	200mg
Salt	0g



# ORGANIC COCONUT MILK

**Variants:**  
11% fat, 17% fat

## Uses:

- Substitute for dairy milk.
- Cooking and baking.
- Ideal for curries, gravies, smoothies or milkshakes.

## Available sizes & packings:

Package Type	SKUs
Cans	200ml, 400ml
Bags (UHT)	5L, 20L
Bags into drums (UHT)	200L

## Loading Details:

Unit size	No. of units per carton	No. of cartons per pallet	Layers on a pallet	No. of pallets in 20ft container	No. of cartons in free loaded 20ft container	L (mm)	W (mm)	H (mm)	Master Carton CBM
200ml	12	270	9	10	5957	300	225	70	0.0047
400ml	12	135	9	10	3589	300	225	115	0.0078

## Storage Conditions:

Store in a cool & dry place.

**Shelf Life: 24 months**

## Nutritional Panel: 11% fat

Average Nutritional Value per 100g	
Energy Value	447.9kJ / 109kcal
Total Fat	11g
-of which Saturates	10.29g
Carbohydrate	1.31g
-of which Sugars	0.3g
Dietary Fibre	0g
Protein	1.1g
Salt	0g

## Nutritional Panel: 17% fat

Average Nutritional Value per 100g	
Energy Value	697kJ / 167kcal
Total Fat	17g
-of which Saturates	15g
Carbohydrate	2.5g
-of which Sugars	0.5g
Dietary Fibre	0g
Protein	1.5g
Salt	0g

# ORGANIC COCONUT CREAM

22% fat

## Available sizes & packings:

Package Type	SKUs
Cans	200ml, 400ml
Bags (UHT)	5L, 20L
Bags into drums (UHT)	200L

## Uses:

- Substitute for dairy-based cooking cream.
- Great to make soups and curries, thicker and richer.
- Baking - cream pies, cakes, etc.
- Alternative for fresh cream, whipped cream, cheese etc.

## Loading Details:

Unit size	No.of units per carton	No.of cartons per pallet	Layers on a pallet	No.of pallets in 20ft container	No.of cartons in freeloaded 20ft container	L (mm)	W (mm)	H (mm)	Master Carton CBM
200ml	12	270	9	10	5957	300	225	70	0.0047
400ml	12	135	9	10	3589	300	225	115	0.0078

## Storage Conditions:

Store in a cool & dry place.

**Shelf Life: 24 months**

## Nutritional Panel:

Average Nutritional Value per 100g	
Energy Value	900kJ / 215kcal
Total Fat	22g
-of which Saturates	20g
Trans fatty acids	0g
Cholesterol	0g
Carbohydrate	3.3g
-of which Sugars	2.3g
Dietary Fibre	0g
Protein	1.7g
Salt	0g

# ORGANIC KING COCONUT PRODUCTS



# KING COCONUT WATER & VARIANTS

## Variants:

- 🌿 Organic King Coconut Water with Lime
- 🌿 Organic King Coconut Water with Mango
- 🌿 Organic King Coconut Water with Passion Fruit
- 🌿 Organic King Coconut Water with Watermelon
- 🌿 King Coconut Water with Pomegranate

## Uses:

- 🌿 Can be consumed directly or mixed with cocktails.
- 🌿 Mocktails and other herbal infusions.
- 🌿 Can be used as a hydration liquid.

## Available sizes & packings:

Package Type	SKUs
Glass Bottle	260ml, 350ml

## Loading Details:

Unit size	No.of units per carton	No.of cartons per pallet	Layers on a pallet	No.of pallets in 20ft container	No.of cartons in freeloaded 20ft container	L (mm)	W (mm)	H (mm)	Master Carton CBM
260ml	12	224	8	10	2800	22.5	16.5	18	0.0067
350ml	12	152	8	10	1800	285	210	185	0.0111

## Nutritional Panel:

	Quantity per 100 g
Energy (kJ)	50.2 kJ / 12 kcal
Protein	0.5 g
Fat	0.5 g
-of which Saturates	0.1 g
Trans fat	0 g
Carbohydrate	3.3 g
-of which Sugars	3.3 g
Fiber	0 g
Sodium	300mg

# ORGANIC COCONUT SPREAD PRODUCTS



# COCONUT SPREADS

## Variants:

- 🌿 Coconut Spread Original
- 🌿 Coconut Spread Crunch
- 🌿 Coconut Spread Cocoa
- 🌿 Coconut Spread Mint

## Uses:

- 🌿 Healthier alternative for regular spreads and butter.
- 🌿 As a spread / topping on toast or pastries, ice cream, yoghurt.
- 🌿 Baking.
- 🌿 As a frosting for sweet treats.

## Available sizes & packings:

Package Type	SKUs
Glass Jars	330g

## Loading Details:

Unit size	No.of units per carton	No.of cartons per pallet	Layers on a pallet	No.of pallets in 20ft container	No.of cartons in freeloaded 20ft container	L (mm)	W (mm)	H (mm)	Master Carton CBM
330g	12	288	24	10	2880	350	260	80	0.007

# COCONUT SPREAD ORIGINAL

## Ingredients:

- 🌿 Organic Desiccated Coconut
- 🌿 Organic Coconut Treacle
- 🌿 Carrageenan



## Nutritional Panel:

	Quantity per 100 g
Energy (kJ)	1017 kJ
Energy (kcal)	24.3 kcal
Fat	10 g
-of which Saturated Fat	9.2 g
Carbohydrate	36 g
-of which Sugars	31 g
Protein	0.8 g
Salt	0.07 g

# COCONUT SPREAD COCOA

## Ingredients:

- 🌿 Organic Desiccated Coconut
- 🌿 Organic Coconut Treacle
- 🌿 Organic Cocoa Powder
- 🌿 Organic Vanilla Extract / Flavor
- 🌿 Salt
- 🌿 Carrageenan



## Nutritional Panel:

	Quantity per 100 g
Energy (kJ)	4113 kJ
Energy (kcal)	983 kcal
Fat	8.5 g
-of which Saturated Fat	8.4 g
Carbohydrate	39 g
-of which Sugars	32 g
Protein	1.5 g
Salt	0.26 g

# COCONUT SPREAD CRUNCH

## Ingredients:

- 🌿 Organic Desiccated Coconut
- 🌿 Organic Coconut Treacle
- 🌿 Organic Cocoa Powder
- 🌿 Organic Cocoa Nibs
- 🌿 Organic Vanilla Extract / Flavor
- 🌿 Salt
- 🌿 Carrageenan



## Nutritional Panel:

	Quantity per 100 g
Energy (kJ)	1025 kJ
Energy (kcal)	245 kcal
Fat	9.4 g
-of which Saturated Fat	9.0 g
Carbohydrate	38 g
-of which Sugars	31 g
Protein	1.9 g
Salt	0.25 g

# COCONUT SPREAD MINT

## Ingredients:

- 🌿 Organic Desiccated Coconut
- 🌿 Organic Coconut Treacle
- 🌿 Organic Cocoa Powder
- 🌿 Organic Vanilla Extract / Flavor
- 🌿 Organic Mint Extract
- 🌿 Salt
- 🌿 Carrageenan



## Nutritional Panel:

	Quantity per 100 g
Energy (kJ)	983 kJ
Energy (kcal)	235 kcal
Fat	8.5 g
-of which Saturated Fat	8.4 g
Carbohydrate	38 g
-of which Sugars	32 g
Protein	1.5 g
Salt	0.26 g



# MEAT ALTERNATIVE PRODUCTS



# VEGAN BURGER PATTY

## Available sizes & packings:

Package Type	SKUs
Box	230g (2 units)

## Ingredients:

- 🌿 Young Jackfruit
- 🌿 Oyster Mushroom
- 🌿 Beetroot Paste
- 🌿 Corn Flour
- 🌿 Isabgol
- 🌿 Coconut Aminos
- 🌿 Onion Powder
- 🌿 Garlic Powder
- 🌿 Coconut Sugar
- 🌿 Spices
- 🌿 Salt
- 🌿 Liquid Smoke
- 🌿 Tamarind Paste
- 🌿 RBD Coconut Oil

## Nutritional Panel:

	Quantity per 100 g
Energy (kJ)	1540 kJ
Energy (kcal)	368 kcal
Fat	31 g
-of which Saturated Fat	26 g
Carbohydrate	21 g
-of which Sugars	2.9 g
Protein	3.3 g
Salt	0.42 g



## Loading Details:

Unit size	No.of units per carton	No.of cartons per pallet	Layers on a pallet	No.of pallets in 20ft container	No.of cartons in free-loaded 20ft container	L (mm)	W (mm)	H (mm)	Master Carton CBM
230g x 2 units	30	42	7	10	420	500	350	290	0.05

# VEGAN MINCED MEAT BALLS

## Available sizes & packings:

Package Type	SKUs
Box	220g (12 units)

## Ingredients:

-  Young Jackfruit
-  Oyster Mushroom
-  Oat Flour
-  Kurakkan Flour
-  Spices
-  Beetroot Powder
-  Isabgol
-  Banana Flour
-  Salt

## Loading Details:

Unit size	No.of units per carton	No.of cartons per pallet	Layers on a pallet	No.of pallets in 20ft container	No.of cartons in free-loaded 20ft container	L (mm)	W (mm)	H (mm)	Master Carton CBM
220g x 12 units	30	42	7	10	420	500	350	290	0.05

## Nutritional Panel:

	Quantity per 100 g
Energy (kJ)	330 kJ
Energy (kcal)	79 kcal
Fat	1.2 g
-of which Saturated Fat	0.1 g
Carbohydrate	17 g
-of which Sugars	1.9 g
Protein	2.9 g
Salt	0.41 g



# VEGAN NUGGETS

## Available sizes & packings:

Package Type	SKUs
Box	240g (12 units)
	120g (6 units)

## Ingredients:

- 🌿 Young Jackfruit
- 🌿 Salt
- 🌿 Oyster Mushroom
- 🌿 Coconut Sugar
- 🌿 Corn Flour
- 🌿 Soy Sauce
- 🌿 Bread Crumbs
- 🌿 Wheat Flour
- 🌿 Spices
- 🌿 Fried in Coconut Oil
- 🌿 Tamarind

## Nutritional Panel:

	Quantity per 100 g
Energy (kJ)	1552 kJ
Energy (kcal)	371 kcal
Fat	31 g
-of which Saturated Fat	26 g
Carbohydrate	22 g
-of which Sugars	2.5 g
Protein	3.4 g
Salt	0.44 g



## Loading Details:

Unit size	No.of units per carton	No.of cartons per pallet	Layers on a pallet	No.of pallets in 20ft container	No.of cartons in freloaded 20ft container	L (mm)	W (mm)	H (mm)	Master Carton CBM
240g x 12 units	30	42	7	10	420	500	350	290	0.05

# BANANA BLOSSOM FISH FILLET

## Available sizes & packings:

Package Type	SKUs
Pouch	250g

## Nutritional Panel:

	Quantity per 100 g
Energy (kJ)	276 kJ
Energy (kcal)	66 kcal
Fat	2.3 g
-of which Saturated Fat	1.9 g
Carbohydrate	10 g
-of which Sugars	0.8 g
Protein	2.5 g
Salt	0.23 g

## Loading Details:

Unit size	No.of units per carton	No.of cartons per pallet	Layers on a pallet	No.of pallets in 20ft container	No.of cartons in free loaded 20ft container	L (mm)	W (mm)	H (mm)	Master Carton CBM
250g x 12 units	100	42	7	10	420	500	350	290	0.05

# NUTRACEUTICALS



# NUTRACEUTICALS

## Available sizes & packings:

Package Type	SKUs
Bottle	60 Capsules

## Loading Details:

Unit size	No.of units per carton	No.of cartons per pallet	Layers on a pallet	No.of pallets in 20ft container	No.of cartons in freeloader 20ft container	L (mm)	W (mm)	H (mm)	Master Carton CBM
60 Capsules	180	42	7	10	420	500	350	290	0.05

# ASHWAGANDHA

## Uses / Benefits:

- 🌿 Natural stress relief
- 🌿 Sexual health
- 🌿 Emotional well-being
- 🌿 Physical health
- 🌿 Reduces blood sugar levels



## Nutritional Panel:

	Quantity per 100 g
Energy (kJ)	1159 kJ
Energy (kcal)	277 kcal
Fat	0 g
-of which Saturated Fat	0 g
Carbohydrate	22 g
-of which Sugars	20 g
Protein	1 g
Salt	2 g

# ACTIVATED CHARCOAL

## Uses / Benefits:

- 🌿 Detoxification and cleansing
- 🌿 Reduces bloating and gas
- 🌿 Gut health
- 🌿 Rapid detoxification
- 🌿 Skin and hair rejuvenation



## Nutritional Panel:

	Quantity per 100 g
Energy (kJ)	316 kJ
Energy (kcal)	90 kcal
Fat	0.3 g
-of which Saturated Fat	0.1 g
Carbohydrate	47 g
-of which Sugars	11 g
Protein	3.7 g
Salt	0.5 g

# GARCINIA

## Uses / Benefits:

- 🌿 Weight loss and belly fat reduction
- 🌿 Treats digestive issues
- 🌿 Immunity support
- 🌿 Blood sugar control
- 🌿 Cholesterol levels



## Nutritional Panel:

	Quantity per 100 g
Energy (kJ)	126 kJ
Energy (kcal)	30 kcal
Fat	0.2 g
-of which Saturated Fat	0 g
Carbohydrate	7.9 g
-of which Sugars	0 g
Protein	4.9 g
Salt	0.00 g



# MORINGA

## Uses / Benefits:

- 🌿 Improves eye health
- 🌿 Fights against bacterial diseases
- 🌿 Works as multivitamin
- 🌿 Makes bones healthier
- 🌿 Protects and nourishes skin and hair



## Nutritional Panel:

	Quantity per 100 g
Energy (kJ)	146 kJ
Energy (kcal)	35 kcal
Fat	6 g
-of which Saturated Fat	1.7 g
Carbohydrate	26 g
-of which Sugars	7.9 g
Protein	25 g
Salt	0.17 g

# ALOE VERA GEL POWDER

## Uses / Benefits:

- 🌿 Treats digestive problems
- 🌿 Helps prevent cancer
- 🌿 Improves nutrient absorption
- 🌿 Strengthen immune system



## Nutritional Panel:

	Quantity per 100 g
Energy (kJ)	42 kJ
Energy (kcal)	10 kcal
Fat	0 g
-of which Saturated Fat	0 g
Carbohydrate	5 g
-of which Sugars	0.3 g
Protein	0.4 g
Salt	0 g

# FRUIT POWDERS

## Available sizes & packings:

Package Type	SKUs
Pouches	50g, 100g, 250g, 500g
Alufoil bag	1kg, 20kg

## Loading Details:


Unit size	No.of units per carton	No.of cartons per pallet	Layers on a pallet	No.of pallets in 20ft container	No.of cartons in freloaded 20ft container	L (mm)	W (mm)	H (mm)	Master Carton CBM
50g	240	42	7	10	420	500	350	290	0.05
20kg	20kg in a bag	40 Bags	10	10	60 Bags	670	460	140	0.043

# PINEAPPLE POWDER

## Nutritional Panel:

	Quantity per 100 g
Energy (kJ)	204 kJ
Energy (kcal)	50 kcal
Fat	0.1 g
-of which Saturated Fat	0 g
Carbohydrate	13 g
-of which Sugars	9.9 g
Protein	0.5 g
Salt	0 g

## Uses:


-  Can be used in smoothies, juices, tea, coffee, sport drinks, cocktails, and mocktails.

# SOURSOP POWDER

## Nutritional Panel:

	Quantity per 100 g
Energy (kJ)	276 kJ
Energy (kcal)	66 kcal
Fat	0.3 g
-of which Saturated Fat	0.1 g
Carbohydrate	17 g
-of which Sugars	14 g
Protein	1 g
Salt	0.01 g

## Uses:


-  Can be used in smoothies, juices, tea, coffee, sport drinks, cocktails, and mocktails.

# SPRAY DRIED MANGO POWDER

## Nutritional Panel:

	Quantity per 100 g
Energy (kJ)	335 kJ
Energy (kcal)	80 kcal
Fat	0 g
-of which Saturated Fat	0 g
Carbohydrate	22 g
-of which Sugars	20 g
Protein	1 g
Salt	0.02 g

## Uses:

-  Can be used in smoothies, juices, tea, coffee, sport drinks, cocktails, and mocktails.

# R&D FACILITIES WE OFFER

At Miditer, innovation is at the core of what we do. Our research and development facilities are equipped to support our B2B customers in creating their own unique products.

## Our R&D Facilities Include:

- 🌱 **Product Formulation:** Our experienced team of food scientists and technologists can help you develop custom formulations tailored to your specific requirements.
- 🌱 **Quality Control:** Our state-of-the-art laboratory is equipped with the latest technology to ensure that our products meet the highest quality standards.
- 🌱 **Sensory Evaluation:** We conduct rigorous sensory evaluations to ensure that your products not only meet nutritional requirements but also taste great.
- 🌱 **Packaging Development:** Our packaging experts can help you design packaging solutions that are both practical and visually appealing.
- 🌱 **Regulatory Compliance:** We stay up-to-date with the latest regulations to ensure that your products meet all necessary regulatory requirements.

### How We Can Help:

- 🌱 **New Product Development:** Whether you're looking to develop a new product or improve an existing one, our team is here to support you every step of the way.
- 🌱 **Ingredient Sourcing:** We can help you source high-quality, natural ingredients to ensure that your products stand out in the market.
- 🌱 **Custom Formulations:** Our team can work with you to develop custom formulations that meet your specific requirements.
- 🌱 **Market Insights:** We stay up-to-date with the latest market trends to ensure that your products are always ahead of the curve.

### Partner with Miditer Today:

Partner with Miditer today and let us help you bring your product ideas to life. Together, we can create innovative, sustainable, and ethically sourced products that will delight your customers.



**Learn more about  
our distribution partnership  
opportunities.**

# DO YOU WANT TO COME ONBOARD AS A **DISTRIBUTION PARTNER WITH US?**

At MIDITER, we believe in the power of collaboration to create positive change. Expand your business or propel your new one with superior products that you can trust in. From offering you great flexibility to meet your requirements to providing you with sustainable products that benefit you, the end-customer and our farmers that nurture and grow each of our products.

Having worked with renowned European brands for over 8 decades, we deliver what we promise and ensure that the trust of our stakeholders is always fulfilled.



**Learn more about  
our distribution partnership  
opportunities.**

# DO YOU WANT TO START **A PRIVATE LABEL WITH US?**

If you are looking for a reputed private labelling provider to expand your brand to include healthy, ethical food products, Miditer is the perfect partner for you.

Our presence expands across the complete Agri value chain from research and development, Agri input distribution, Agri Machinery, Farming, Processing & Manufacturing and Retail & Exports.

We are perfectly positioned to provide you with high quality products at a competitive price, which in turn will give you the leverage needed to build a leading brand in your market. Furthermore, our team will work with you throughout the process, from concept to shelf.



**Learn more about  
our Private labelling  
service.**

# DO YOU WANT TO DO BULK PURCHASING?

We offer a range of sustainable bulk packaging options to suit your requirements, that are in line with keeping sustainability at the heart of your brand, with no compromise on the quality! Get in touch with us to learn more.

**Learn more about  
our bulk purchasing  
options.**





# DO YOU WANT TO **DEVELOP YOUR OWN PRODUCTS WITH US?**

At MIDITER, we believe in the power of innovation to create a healthier and more sustainable future.

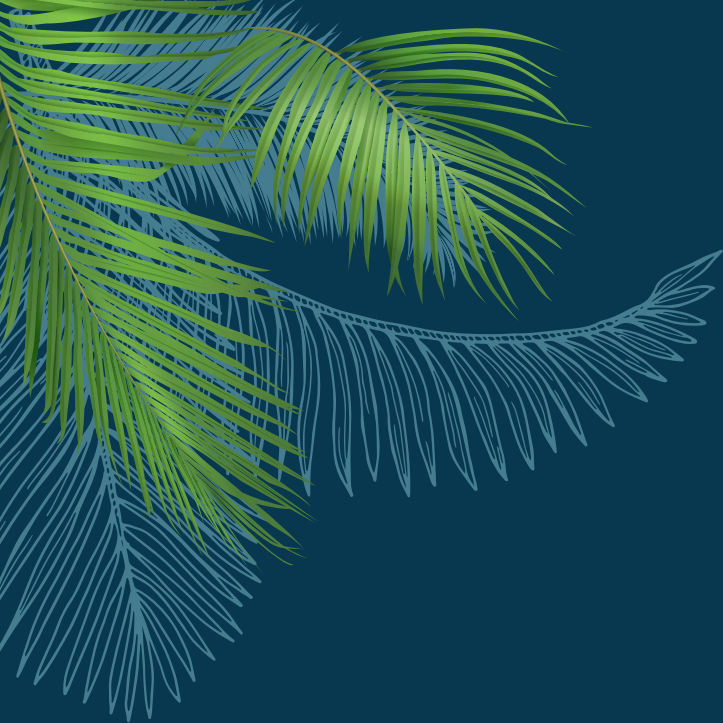
We take pride in offering personalized services to meet the unique needs and preferences of our valued customers. Our commitment to excellence extends beyond our existing product line, as we provide bespoke solutions through our Custom Product Development Services. Partner with us to bring your vision to life and experience the exceptional quality of locally grown, natural, and sustainable plant-based products from the tropical paradise of Sri Lanka.

Join Us in Making a Difference



**Learn more about  
our R&D facilities**





**Product of  
Ceylon**



**We are happy to help with  
any questions you may have**

**You can get in touch  
with our team via**

**Visit our  
website to  
learn more**

 +94 76 644 7803  [inquiries@miditer.com](mailto:inquiries@miditer.com)  [www.miditer.com](http://www.miditer.com)

